



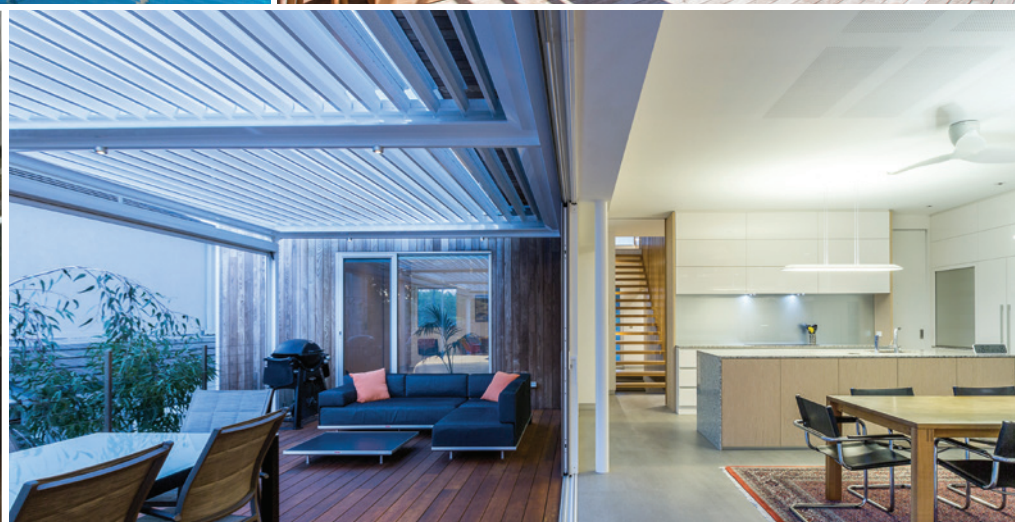
the louvretec room 



THE INS AND OUTS OF THE LOUVRETEC ROOM



FRONT COVER IMAGE:
ARCHITECT SIMON RODRIGUES
PHOTOGRAPHER SERENA PEARCE



THE LOUVRETEC ROOM

FLOW TO THE OUTSIDE	PG 2
STEP 1 DECKING	PG 4
STEP 2 STRUCTURAL FRAME	PG 6
STEP 3 OPENING ROOF	PG 8
STEP 4 ENCLOSING YOUR ROOM	PG 12
STEP 5 FINISHING TOUCHES	PG 18

LouvreTec®
Engineered for Life

the louvretec room

FLOW TO THE OUTSIDE

Let Louvretec show you how to transform your outdoor deck space in to a year round usable room.

It has been said that "everything has a flow to the outside" - this being the great tradition in NZ and Australian architecture. Now it has never been easier, not more exciting, to do this.

5 BASIC STEPS

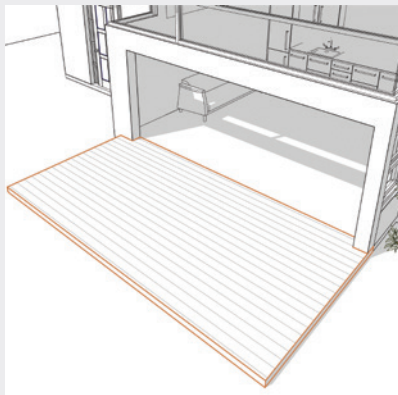
This brochure outlines the choices and options available, outlining the five basic steps to consider when designing your Louvretec Room.

Bring the outdoors in and design with a difference, talk to Louvretec to discuss how.



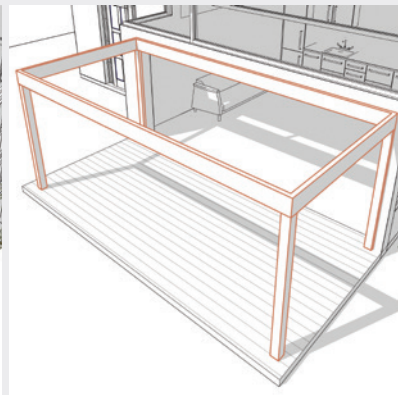
STEP 1 DECKING

You will need a deck.



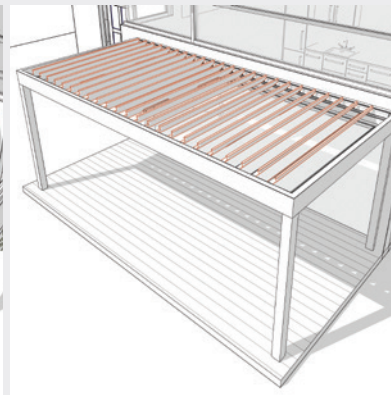
STEP 2 STRUCTURAL FRAME

With a structural Frame over the deck to support the Opening Roof.



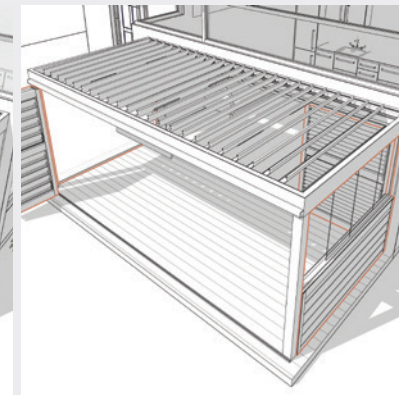
STEP 3 OPENING ROOF

Choose your Opening Roof from Louvretec's 7 design choices.



STEP 4 IN-FILL SIDES

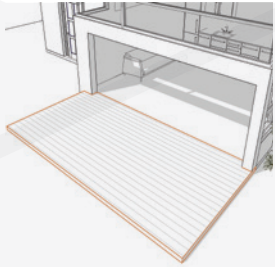
Closing in the sides? There are many infill options available. Also consider leaving some of the space fully open.



STEP 5 FINISHING TOUCHES

Let there be Light, Heat & Sounds - adding the finishing touches.





STEP 1 decking

We don't do decks - This is the only part of the seven steps not undertaken by Louvretec.

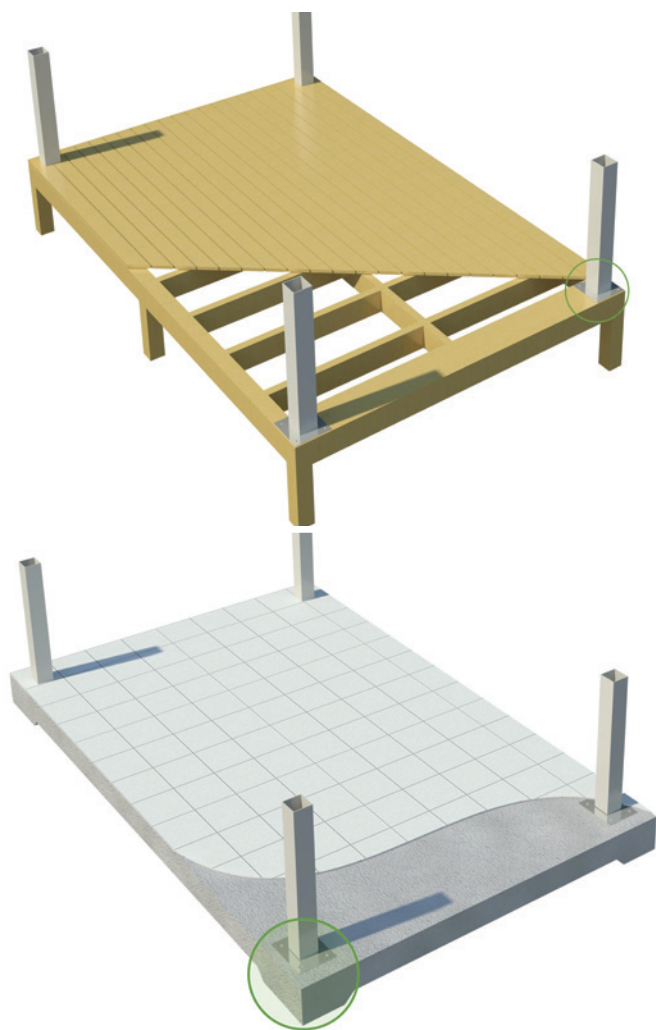
You may have an existing deck, or the deck may be part of your new home build.

Decks are typically timber or composite such as Eco deck or concrete with tiled finish.

Deck construction is critical as it forms the foundation to support your Louvretec Room structure. For decks under construction, discuss layout and fixing options with Louvretec.

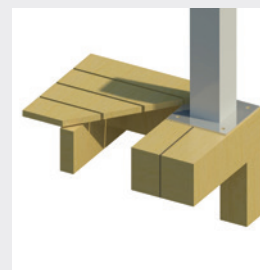


From the ground up, the choice is yours

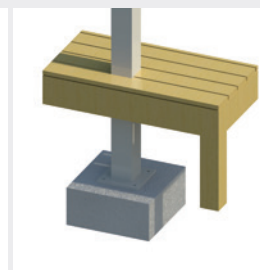


TIMBER DECKING

Make sure your deck complies with council requirements. On existing additional structural support may be required. Posts can sit outside of deck or within deck structure with decking cut around post. If the structural posts are fitting directly to the deck ensure there is adequate solid timber fixing at post connection points. Alternatively extend the posts to ground level and fix to a suitably engineered concrete pad.



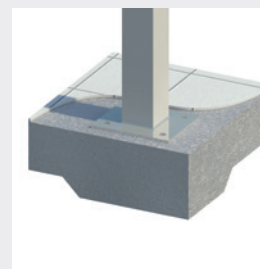
POSTS SITTING DIRECTLY ON TO DECK



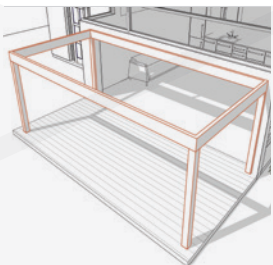
POSTS PROJECTED THROUGH DECK ON TO CONCRETE PAD

CONCRETE

A typical 100mm concreted reinforced patio requires a concrete foundation under the post fixing points. Tiles or decorative surfaces can be laid to cover the base plate.



FIXING TO CONCRETE



STEP 2 structural frame by louvretec

Louvretec structural frames are fully engineered and provide for aesthetically pleasing lines. Unaffected by weather, with regular cleaning they are virtually maintenance free.

Beams & posts are custom designed to be structurally compliant to the wind zone specific to each project undertaken.

They are also designed to incorporate wall in-fills such as outdoor blinds, frameless sliding or tilt-turn doors as well as a range of louvre panel infills.



designed to compliment your style

PURPOSE BUILT, FREE STANDING, ALUMINIUM STRUCTURAL FRAME

NEW STRUCTURES

LOUVRETEC ALUMINIUM FRAMES + POSTS

Aluminium posts and frames are an ideal framework for your Louvretec Room.

Consider possible wall in-fill options – these can determine frame design, post size and location, as well as the method of storm water run-off and electrical wiring requirements.

Choice of colour is also an important consideration at this point. The beams and posts can be powder coated to match existing fascia or house colours. In many instances the Opening Roof may be a different colour – generally Opening Roofs tends to suit lighter colours.

TALK TO YOUR LOUVRETEC DEALER ABOUT TECHNICAL DATA ON FIXING AND FREE STANDING OPTIONS.

NEW STRUCTURES

WOODEN FRAMES & POSTS

Louvretec recommends the use of glulam structural timber that will withstand the elements. Ensure correct timber is used that will withstand the elements and not be subject to warping, expanding or contracting.

EXISTING STRUCTURES

Sometimes existing structures, such as a well-made pergola can be modified to take an Opening Roof. Some modifications can work well, or it may be best to start again – discuss your options with your Louvretec Dealer.





STEP 3 opening roof

The Louvretec range of seven Opening Roofs offers much by way of design options and blade spans. Style, choice, multiple options are available to suit your architectural style and your needs.



adjust for privacy, sun and weather



200 SUPER ROOF



180 LINEAR OPENING ROOF



STEP 3

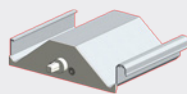
opening roof options

Blade designs range from flat, concave, convex, curved, linear and translucent, in widths of 260mm; 200mm; 180mm.

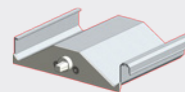
A visit to your nearest Louvretec showroom is strongly recommended – see the range of options available before deciding.

Blade choice also depends upon optimum spans required and relevant wind zones. Bigger spans and higher wind speeds require heavy duty blades – all available as part of the new Louvretec product range.

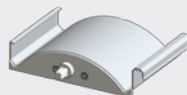
FOR FURTHER INFORMATION
CONTACT YOUR LOUVRETEC DEALER OR VISIT
www.louvretec.com



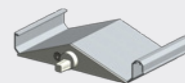
200 SUPER ROOF PROFILE DETAIL



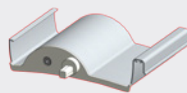
200 SUPER ROOF LITE PROFILE DETAIL



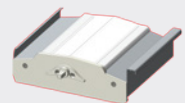
200 SUPER ROOF LITE CURVED PROFILE DETAIL



180 LINEAR PROFILE DETAIL



180 CLASSIC PROFILE DETAIL



260 TRANSLUCENT PROFILE DETAIL



200 SUBURBAN DIRECT PROFILE DETAIL

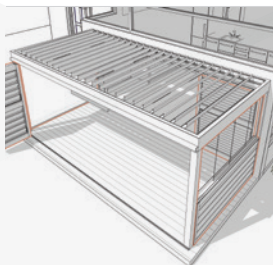




OPENING ROOF WITH CLEAR PVC BLINDS



OPENING ROOF WITH MESH BLINDS



STEP 4 enclosing your room

Think differently – You can do this with The Louvretec Room that you can't do with any other room in your house. Be as innovative as you like – There is now an extensive range of Louvretec wall infill options that allows you to customise in a myriad of ways.

Change The Louvretec Room as often as the seasons change!

All have been tried and tested and are fully supported, warranted and proudly supplied by Louvretec.



RECTANGULAR SUN LOUVRES



AIRFOIL SUN LOUVRES



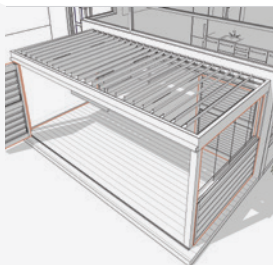
OUTDOOR BLINDS



LIGHTING



SUNFLEX GLASS SLIDING + TILT & TURN DOORS



STEP 4 enclosure options

There are a range of Louvretec wall infill options available.

AIRFOIL SUN LOUVRES: Sliding; Bi-Folding; Plantation Shutters; Adjustable Panels

RECTANGULAR SUN LOUVRES: Sliding; Bi-Folding; Plantation Shutters; Adjustable Panels

ALUMINIUM WEATHERBOARDS: Infills

OUTDOOR BLINDS: Mesh; Clear PVC

FRAMELESS GLASS DOORS: Sliding; Tilt & Turn.

AIRFOIL SUN LOUVRES

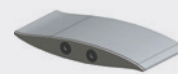
Choose the style of louvre blade. Louvretec offers a range of seven different Airfoil Sun Louvres ranging in size from 70mm to 200mm. Available as fixed panels; hand adjustable panels; motorised panels; sliding, bi-folding or hinged louvred doors or window shutters; or hinged plantation shutters.



70 MINI BLADE



90 MIDI BLADE



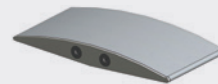
150 MIDI AIRFOIL BLADE



95 P40 MIDI BLADE



120 AIRFOIL BLADE



180 AIRFOIL BLADE



200 MAXI BLADE



RECTANGULAR SUN LOUVRES

Choose the style of louvre blade. Louvrectec offers a range of 6 different Rectangular Sun Louvres ranging in size from 95mm to 200mm. Available as fixed panels; hand adjustable panels; motorised panels; sliding, bi-folding or hinged louvred doors or window shutters; or hinged plantation shutters.



95 BELLA VISTA BLADE



95 BELLA VISTA HEAVY BLADE



120 LOUVRELINE BLADE



125 WEATHERBOARD BLADE



180 LOUVRELINE
WEATHERBOARD BLADE



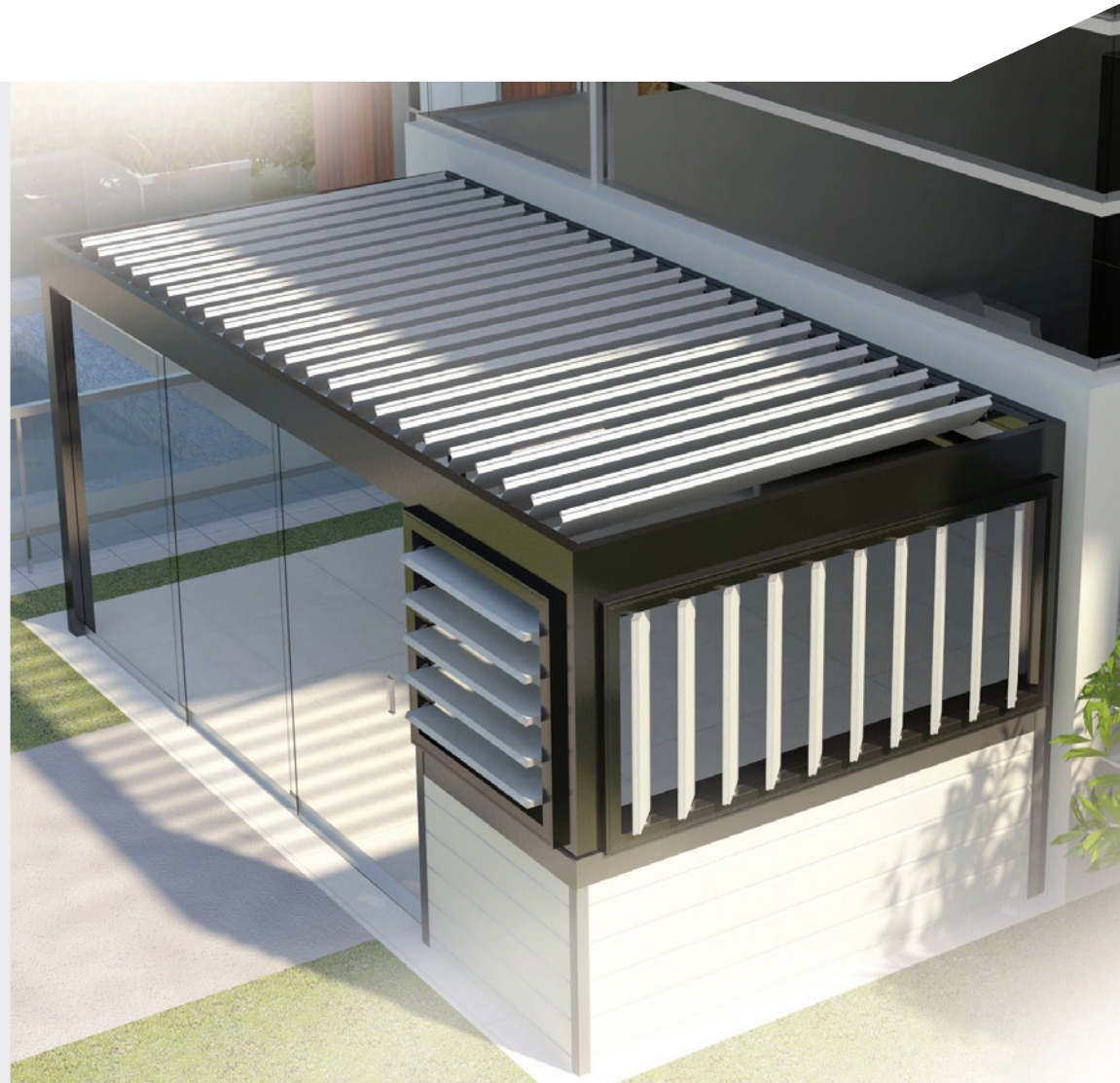
200 LOUVRELINE BLADE

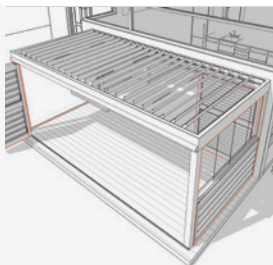


135MM HI SPAN



165MM HI SPAN





outdoor blinds

Outdoor Blinds vary according to the wind zone and climatic conditions the blind will operate in. The majority of Louvretec Outdoor Blinds are between 2.2m- 2.5m high and span between 2.0m- 3.5m wide. Outdoor Blinds can be operated spring assisted push/pull, or with an easy to use crank driven gearbox. Outdoor Blinds can also be supplied motorised, using a Somfy motor as used in the Opening Roof – thus roof and blinds can all be operated off one remote multi-channelled controller.

MESH OUTDOOR BLINDS

There is a wide range of coloured mesh cloth available. Mesh comes in varying degrees of openness, choose depending on the degree of shelter; privacy and protection required. Mesh has better warranties than Clear PVC and is more stable and better performing than Clear PVC.

CLEAR OR TINTED PVC OUTDOOR BLINDS

Clear PVC blinds have two advantages over Mesh blinds. One they can be clearly seen through, if this is a requirement, Two they provide better protection from driving wind and rain. Due to the fact Clear PVC is subject to expansion in heat and contraction in cold, it does not perform as well or carry the same warranties as Mesh.



sunflex

ALL-GLASS SLIDING OR TILT & TURN DOORS AND WINDOWS

Louvretec are pleased to introduce Sunflex all-glass Sliding and Tilt & Turn doors and windows. European designed, these unique all-glass Frameless Panels create a perfect, fully adjustable wall infill for The Louvretec Room. All doors are glazed with 10mm toughened safety glass.



ALL-GLASS FRAMELESS SLIDING SYSTEM SF20

The frameless design of this sliding system ensures optimum visual transparency at all times to your Louvretec Room. On opening or closing the first panel the other panels are opened or closed by an interlocking follower. Ball bearing bottom hung rolling carriages ensure smooth running of the panels. Internal or external locking of the sliding panels (optional).

ALL-GLASS FRAMELESS TILT & TURN SYSTEM SF25

Enjoy complete versatility with this Bi-Fold slide & turn system. Each panel is individually movable, enabling the entire frontage to be parked as a narrow stack on the side. This gives a totally impediment free opening with clear passage from the inside to outside, and the opened panels require very little space.





STEP 5 finishing touches

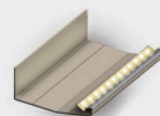
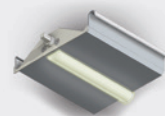


New for 2017 is a comprehensive range of lighting options developed specifically for the Louvretec Room. Using Italian designed Teleco/ Inlumina products, we can now offer lighting solutions that greatly extend the time spent in your covered outdoor entertaining and living space. TELECO AUTOMATION and INLUMINA are a single business group specialising in home automation and LED lighting. Available in over 40 countries they are a world leader in this field.



4 SIMPLE LIGHTING OPTIONS:

1. LOUVRETEC LED BLADE LIGHTING
UNDER BLADES OR FRAME
2. LOUVRETEC STRIP GUTTER LIGHTING
TO INSIDE FACE OF GUTTER
3. LOUVRETEC DOWNLIGHTS
IN CONDUIT UNDER FRAME
4. LOUVRETEC PROJECTOR
LIGHTS FIXED EXTERNALLY
TO LOUVRETEC FRAME





finishing touches



The perfect synergy of modern design and outstanding heating performance. Strong, efficient infrared heat combined with an ultra-thin and stylish design – the new Platinum Smart-Heat Electric complements the atmosphere of your Louvretec room.

New and innovative radiant outdoor heating technology has been developed by Bromic resulting in an electric heater that boasts optimal heat output in a high end, minimalist frame.

BROMIC
HEATING

PLATINUM
SMART-HEAT™ ELECTRIC

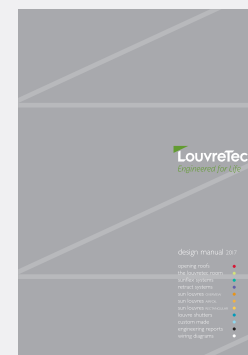
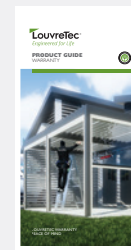
FEATURES:

- Efficient and Powerful infrared Heating Technology
- High Quality Stainless Steel Construction
- Minimal Light Emission
- Heat Zones – one or more heaters can be switched on and off simultaneously from a single remote-located switch
- Can be integrated into smart control systems
- IPX5 water protection rating
- Suitable for outdoor and indoor heating applications – both commercial and residential
- Standard Mounting bracket included with heater
- Optional Mounting Accessories
- Ceiling Recess (flush)

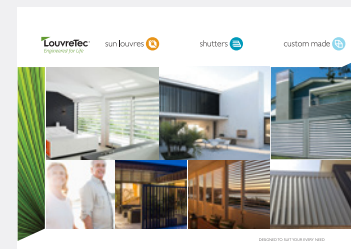
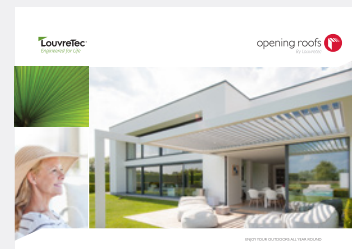
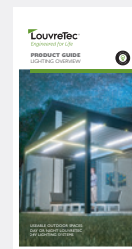


discover the louvretec range

Explore the full Louvretec range online at www.louvretec.co.nz or contact your local dealer for our specific product brochures and comprehensive design manual.



FOR MORE INFORMATION VISIT:
WWW.LOUVRETEC.CO.NZ
WWW.LOUVRETEC.COM.AU







LOUVRETEC IS AVAILABLE WORLDWIDE

NEW ZEALAND :

PHONE 0800 LOUVRES

EMAIL info@louvretec.co.nz

VISIT www.louvretec.co.nz

AUSTRALIA :

PHONE 1300 MYLOUVRES

EMAIL info@louvretec.com.au

VISIT www.louvretec.com.au

YOUR LOCAL DEALER :

LOUVRETEC ROOM BROCHURE IS COMPLEMENTED
BY A COMPREHENSIVE PRODUCT MANUAL, FOR
MORE INFORMATION SEE WWW.LOUVRETEC.CO.NZ



BY LOUVRETEC :

opening roofs 

the louvretec room 

sun louvres 

shutters 

custom made 